

DRAWING NO.

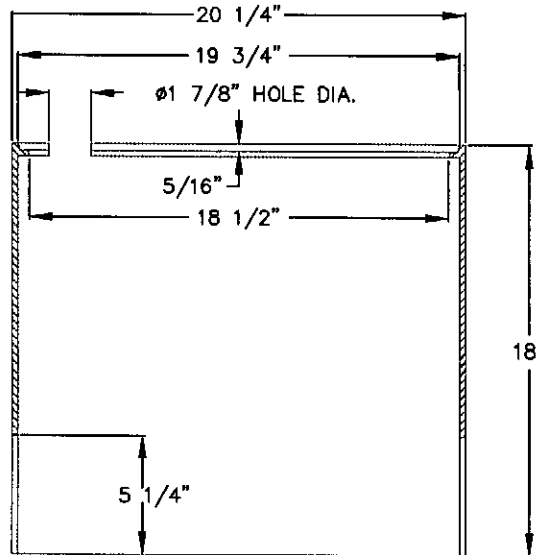
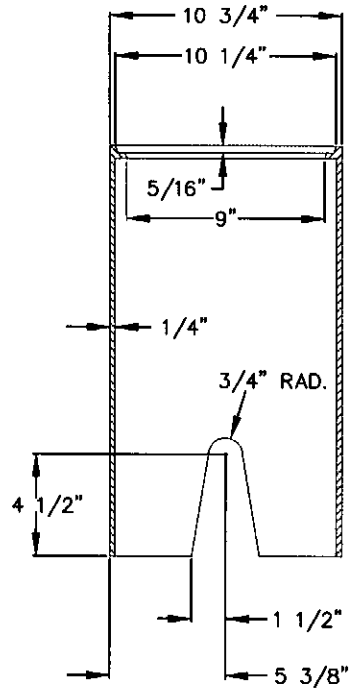
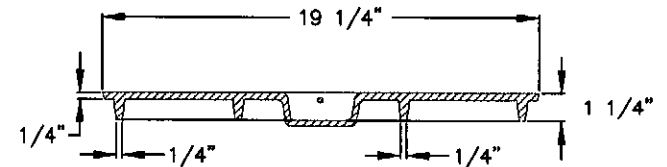
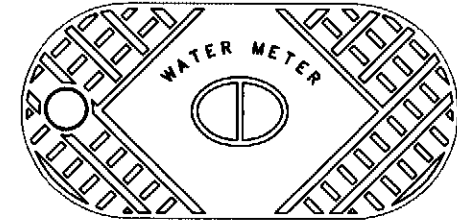
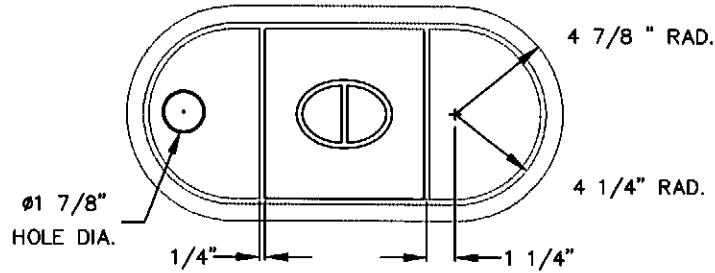
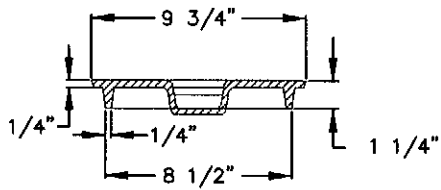
TITLE

201.00	3/4" WATER METER BOX FOR USE WITH 3/4" WATER SERVICES
202.00	1" WATER METER BOX FOR USE WITH 1" WATER SERVICES
203.00	1 1/2" AND 2" WATER METER BOX FOR USE WITH 1 1/2" AND 2" WATER SERVICES
204.00	3" WATER METER VAULT FOR UNDERGROUND INSTALLATION
205.00	4" WATER METER VAULT FOR UNDERGROUND INSTALLATION
206.00	5/8" x 3/4" WATER METER SETTER FOR 3/4" WATER SERVICE
210.00	3/4" AND 1" SERVICE LINE INSTALLATION (REHAB.) FOR REHABILITATION OF 3/4" AND 1" WATER SERVICES
212.00	3/4" AND 1" SERVICE LINE INSTALLATION (NEW) FOR 3/4" AND 1" WATER SERVICES
230.00	WATER PIPE COVER REQUIREMENTS FOR 6" - 36" WATER PIPE
231.00	MAXIMUM JOINT DEFLECTION FOR DUCTILE IRON WATER LINE
232.00	THRUST BLOCKING FOR 6" - 12" WATER LINE
233.00	D.I. PIPE BEDDING AND MAXIMUM DEPTH OF COVER
234.00	SPIDER SUPPORT FOR DUCTILE IRON PIPE INSTALLED IN STEEL ENCASMENT PIPE
235.00 (1 OF 2)	FIRE HYDRANT INSTALLATION FOR 6" 3-WAY FIRE HYDRANTS
235.00 (2 OF 2)	FIRE HYDRANT INSTALLATION FOR 6" 3-WAY FIRE HYDRANTS
237.00	WATER VALVE BOX FOR ROADWAY AND UNPAVED AREAS



STANDARD DRAWING FOR  
TABLE OF CONTENTS  
FOR WATER LINE DRAWING TITLES

200.00



**NOTES:**

- A. ASTM A 48 CLASS 30B
- B. NON-TRAFFIC LOAD RATING
- C. ESTIMATED WEIGHT:  
COVER 20 LBS.  
BOX 80 LBS.  
TOTAL 100 LBS.
- D. 7" MINIMUM OF CLEAN STONE TO BE PLACED UNDER BOX.
- E. DECATUR MBX-2HP, SIGMA CORP. MB-388T, OR APPROVED EQUAL.

*Settled 1752*  
**JAMESTOWN**  
NORTH CAROLINA

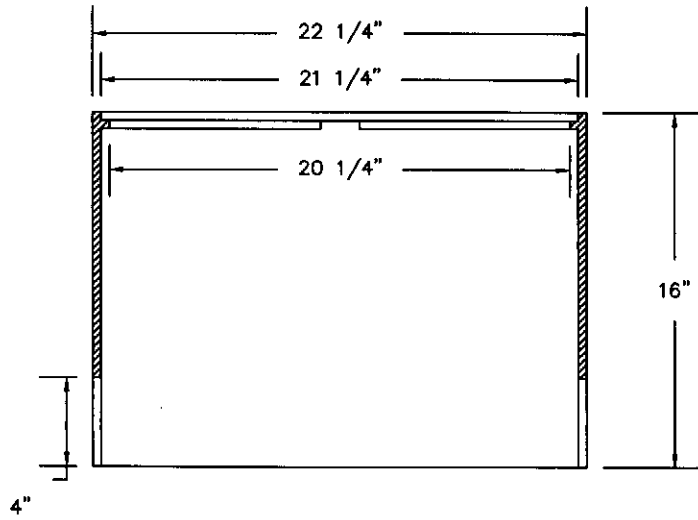
APPROVED *MAY 19 2009*

REVISIONS

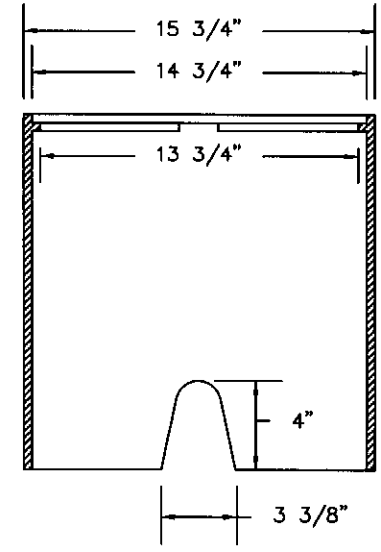
STANDARD DRAWING FOR  
**3/4" WATER METER BOX**  
FOR USE WITH 3/4" WATER SERVICES

201.00

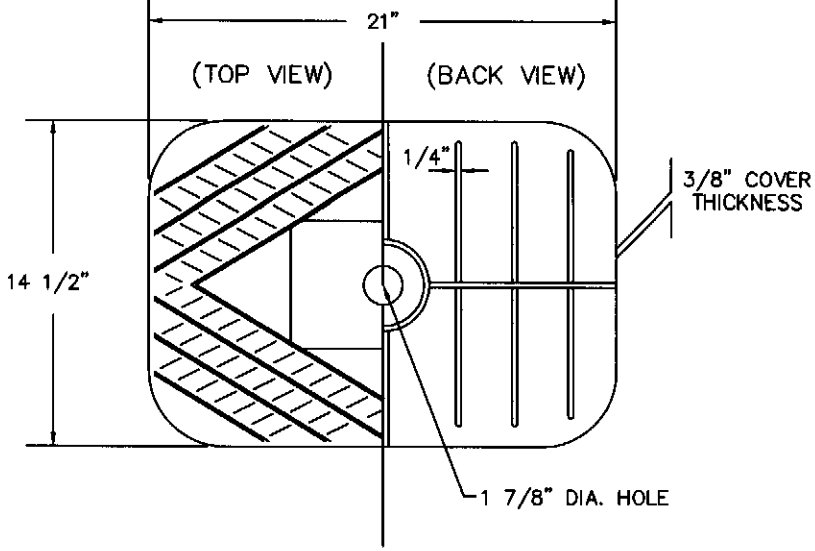
SIDE CROSS SECTION VIEW



END CROSS SECTION VIEW



COVER VIEW



NOTES:

- A. METER BOX BODY AND LID SHALL BE MADE OF CAST IRON, RATED ASTM A48, CLASS - 30B.
- B. MEETS H20 LOAD STANDARDS
- C. APPROXIMATE METER BOX WEIGHT:  
 METER BOX BODY = 89 LBS.  
 COVER = 39 LBS.  
 TOTAL WEIGHT = 128 LBS.
- D. 7" MINIMUM OF CLEAN STONE TO BE PLACED UNDER BOX.
- E. WATER METER BOX SHALL BE SIGMA CORP. MB-381T OR APPROVED EQUAL. APPROVED EQUAL.

*Settled 1752*  
**JAMESTOWN**  
 NORTH CAROLINA

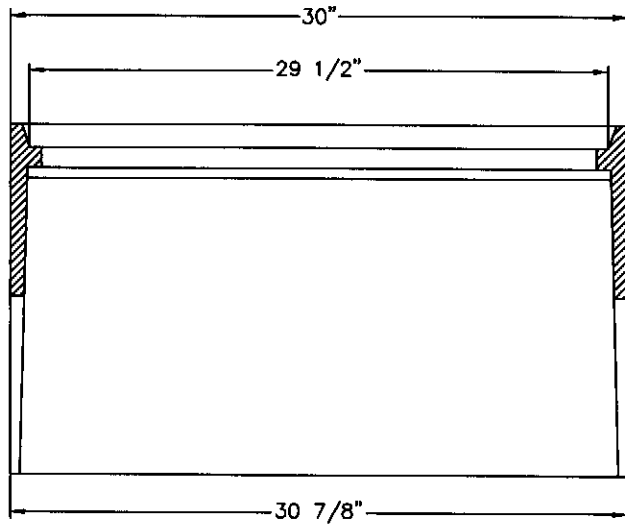
APPROVED MAY 19 2009 *[Signature]*

REVISIONS

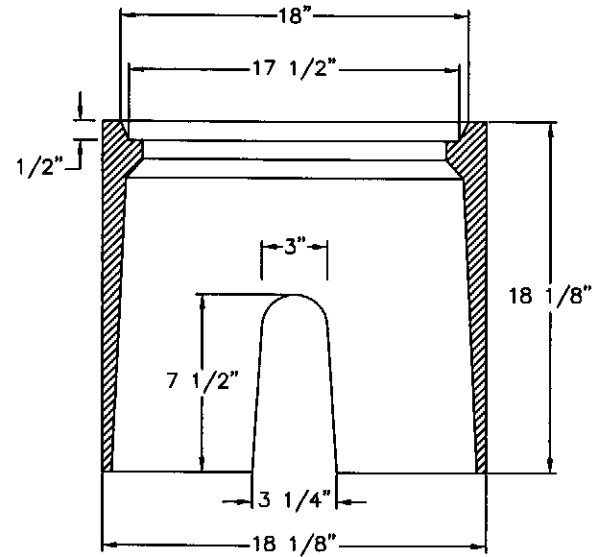
STANDARD DRAWING FOR  
**1" WATER METER BOX**  
 FOR USE WITH 1" WATER SERVICES

202.00

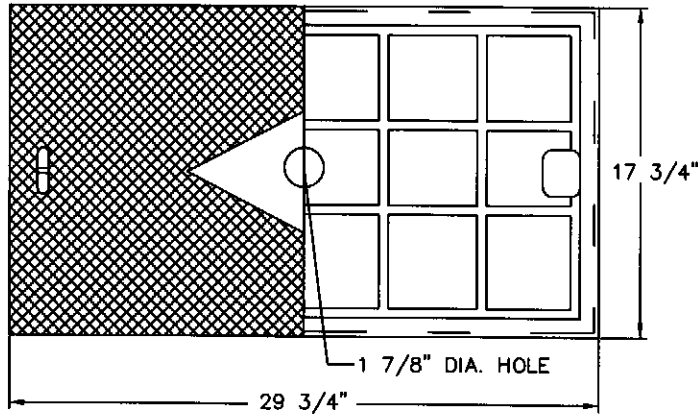
SIDE CROSS SECTION VIEW



END CROSS SECTION VIEW



PLAN VIEW  
(COVER TOP AND BOTTOM)



NOTES:

- A. METER BOX BODY AND LID SHALL BE MADE OF CAST IRON, RATED ASTM A48, CLASS - 30B.
- B. APPROXIMATE METER BOX AND COVER WEIGHT: 272 LB.
- C. 7" MINIMUM OF CLEAN STONE TO BE PLACED UNDER BOX.
- D. WATER METER BOX SHALL BE SIGMA CORP. MB-2202T METER BOX AND LID OR APPROVED EQUAL.
- E. MEETS H2O LOADING REQUIREMENTS

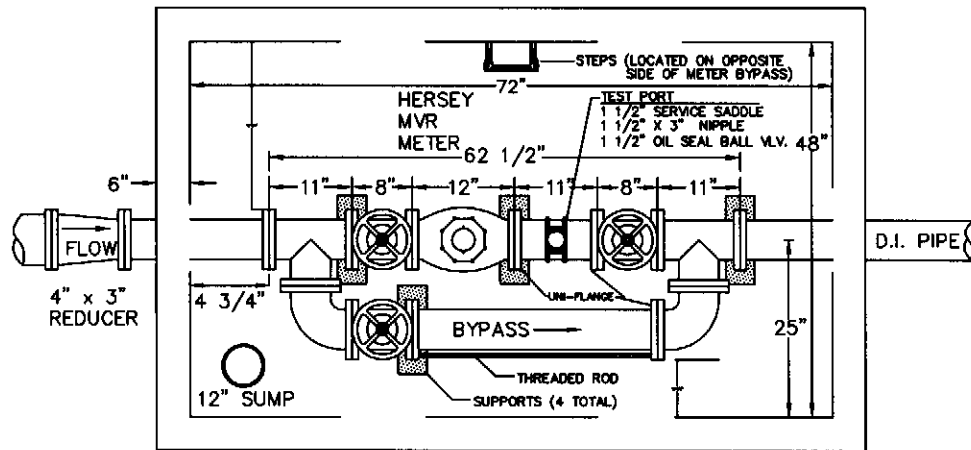
*Settled 1752*  
**JAMESTOWN**  
NORTH CAROLINA

APPROVED: MAY 19 2009

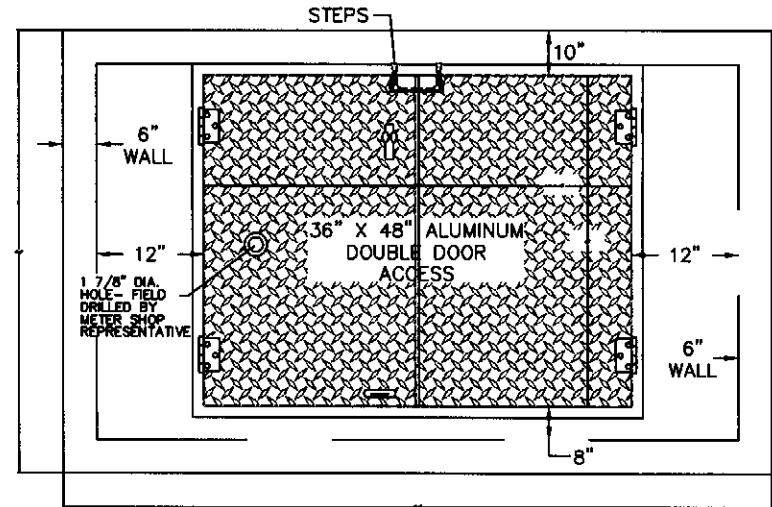
REVISIONS	

STANDARD DRAWING FOR  
1 1/2" AND 2" WATER METER BOX  
FOR USE WITH 1 1/2" AND 2" WATER SERVICES

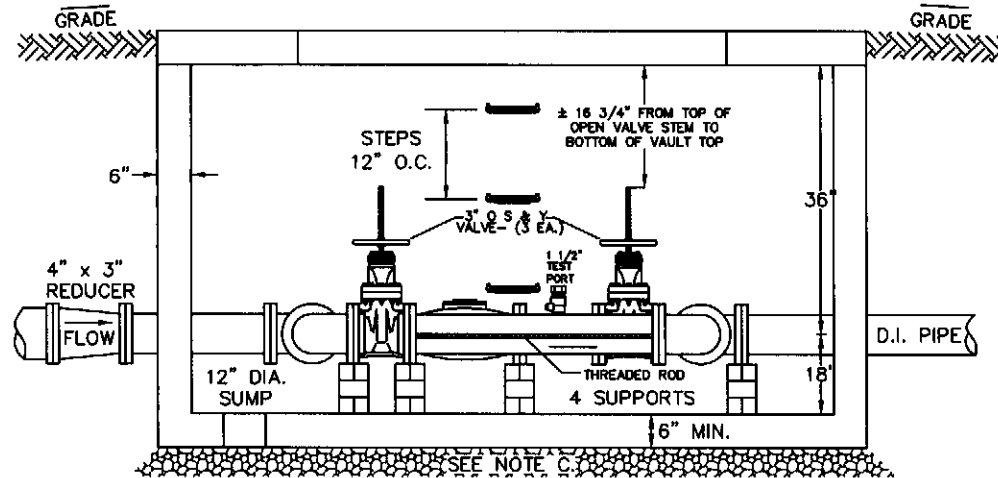
203.00



TYPICAL PLAN



TOP 6" REINFORCED PCC SLAB



TYPICAL ELEVATION

NOTES:

A. ALUMINUM DOUBLE DOOR ACCESS:

- 1). 300 PSF LOADING
- 2). CAST INTO 6" PCC SLAB
- 3). MANUFACTURED BY U.S. FOUNDRY & MANUFACTURING COMPANY OR BY AN APPROVED EQUAL
- 4). SHALL BE LOCKABLE BY USE OF LOCKING BOLTS

B. VAULT:

- 1). SHOP DRAWINGS FOR VAULT ARE REQUIRED BEFORE INSTALLATION.
- 2). PRECAST BOX SHALL HAVE 4000 PSI MIN. STRENGTH.
- 3). VAULT MAY BE CONSTRUCTED OF 8" CONCRETE BUILDING BLOCKS WITH 8" THICK CONCRETE BOTTOM @ 3000 PSI COMPRESSIVE STRENGTH. CONCRETE BUILDING BLOCK SHALL MEET SUBSECTION 1040-2 OF THE LATEST EDITION OF THE NCDOT STANDARD SPECIFICATIONS FOR ROAD & STRUCTURES.

C. FLOOR:

- OPTION 1- 6" PCC BOTTOM WITH DRAIN AND MIN. 12" OF #57 STONE.
- OPTION 2- OPEN BOTTOM WITH MIN. 18" OF #57 STONE.
- D. 3" METER ASSEMBLY SHALL BE PURCHASED FROM THE TOWN OF JAMESTOWN PUBLIC SERVICES DEPARTMENT. CONTACT (336) 454-1138 FOR MORE INFORMATION.

*Settled 1752*  
**JAMESTOWN**  
NORTH CAROLINA

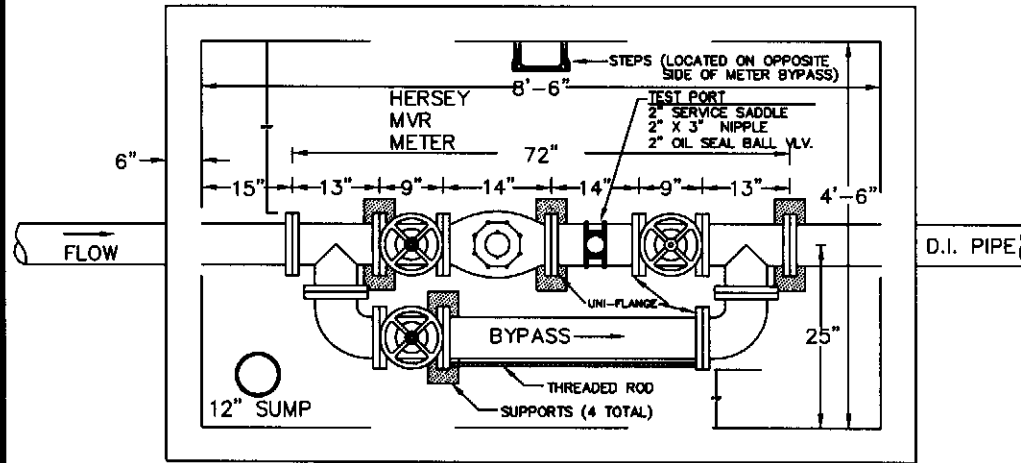
APPROVED... NOV 18, 2009

REVISIONS

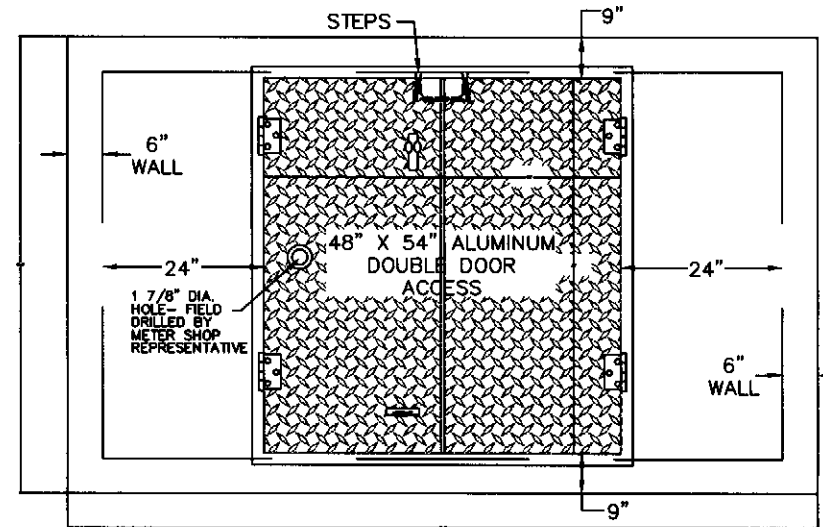
NO.	DESCRIPTION

STANDARD DRAWING FOR  
**3" WATER METER VAULT**  
FOR UNDERGROUND INSTALLATION

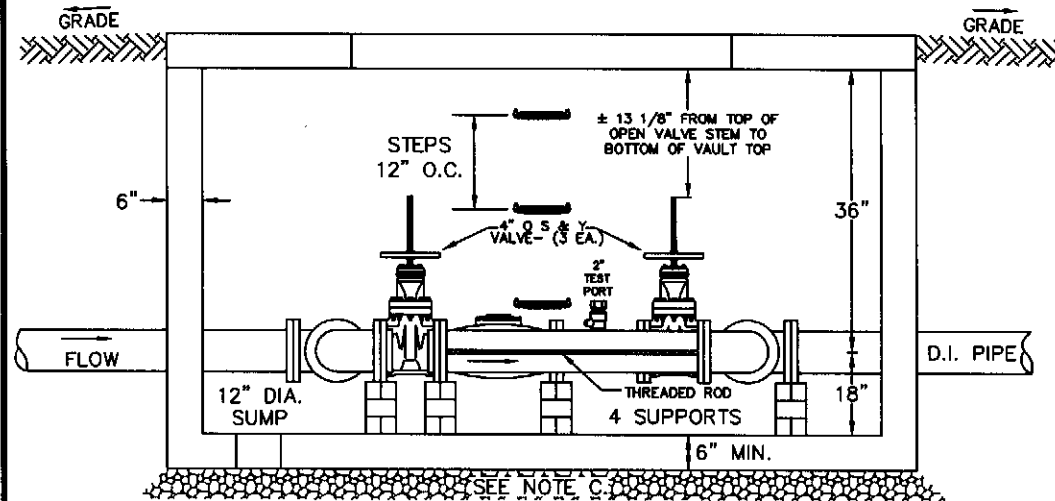
204.00



TYPICAL PLAN



TOP 6" REINFORCED PCC SLAB



TYPICAL ELEVATION

NOTES:

- A. ALUMINUM DOUBLE DOOR ACCESS:
  - 1). 300 PSF LOADING
  - 2). CAST INTO 6" PCC SLAB
  - 3). MANUFACTURED BY U.S. FOUNDRY & MANUFACTURING COMPANY OR BY AN APPROVED EQUAL
  - 4). SHALL BE LOCKABLE BY USE OF LOCKING BOLTS
- B. VAULT:
  - 1). SHOP DRAWINGS FOR VAULT ARE REQUIRED BEFORE INSTALLATION.
  - 2). PRECAST BOX SHALL HAVE 4000 PSI MIN. STRENGTH.
  - 3). VAULT MAY BE CONSTRUCTED OF 8" CONCRETE BUILDING BLOCKS WITH 8" THICK CONCRETE BOTTOM @ 3000 PSI COMPRESSIVE STRENGTH. CONCRETE BUILDING BLOCK SHALL MEET SUBSECTION 1040-2 OF THE LATEST EDITION OF THE NCDOT STANDARD SPECIFICATIONS FOR ROAD & STRUCTURES.
- C. FLOOR:
  - OPTION 1- 6" PCC BOTTOM WITH DRAIN AND MIN. 12" OF #57 STONE.
  - OPTION 2- OPEN BOTTOM WITH MIN. 18" OF #57 STONE.
- D. 4" METER ASSEMBLY SHALL BE PURCHASED FROM THE TOWN OF JAMESTOWN PUBLIC SERVICES DEPARTMENT. CONTACT (336) 454-1138 FOR MORE INFORMATION.

Settled 1752  
**JAMESTOWN**  
 NORTH CAROLINA

APPROVED NOV 18 2009

REVISIONS	

STANDARD DRAWING FOR  
**4" WATER METER VAULT**  
 FOR UNDERGROUND INSTALLATION

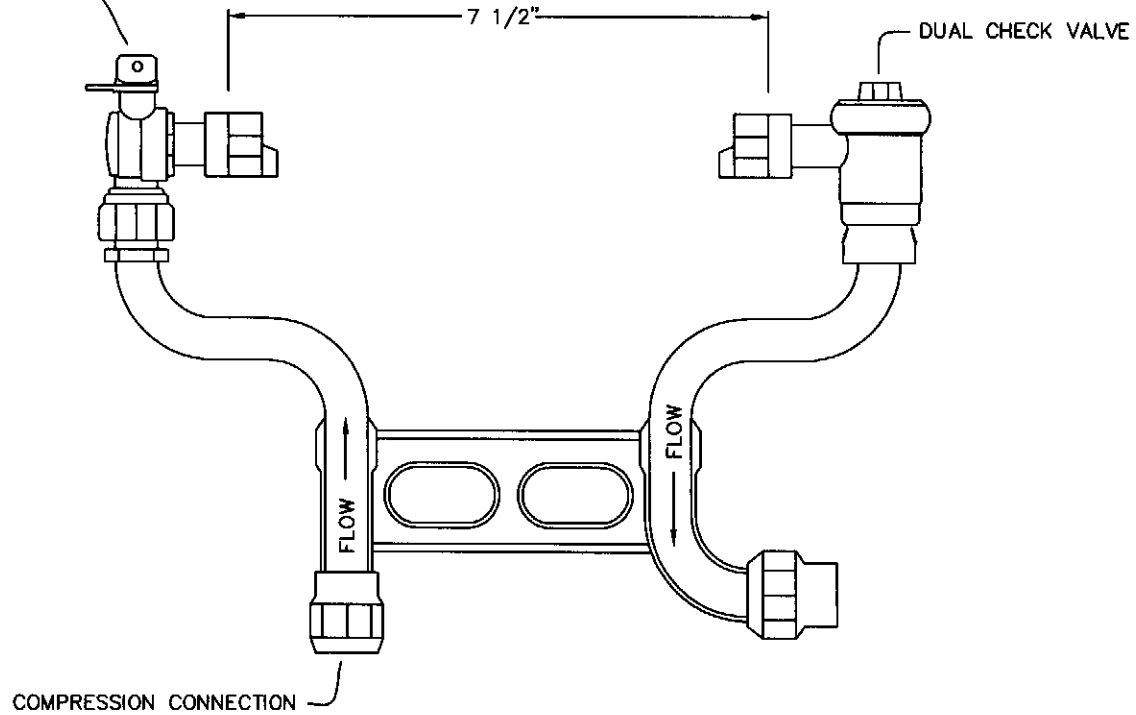
205.00

ANGLE BALL VALVE

7 1/2"

DUAL CHECK VALVE

COMPRESSION CONNECTION



NOTES:

APPROVED MANUFACTURERS INCLUDE:

1. MUELLER B2404R-2
2. FORD VBH70 w/PW

Settled 1752  
**JAMESTOWN**  
NORTH CAROLINA

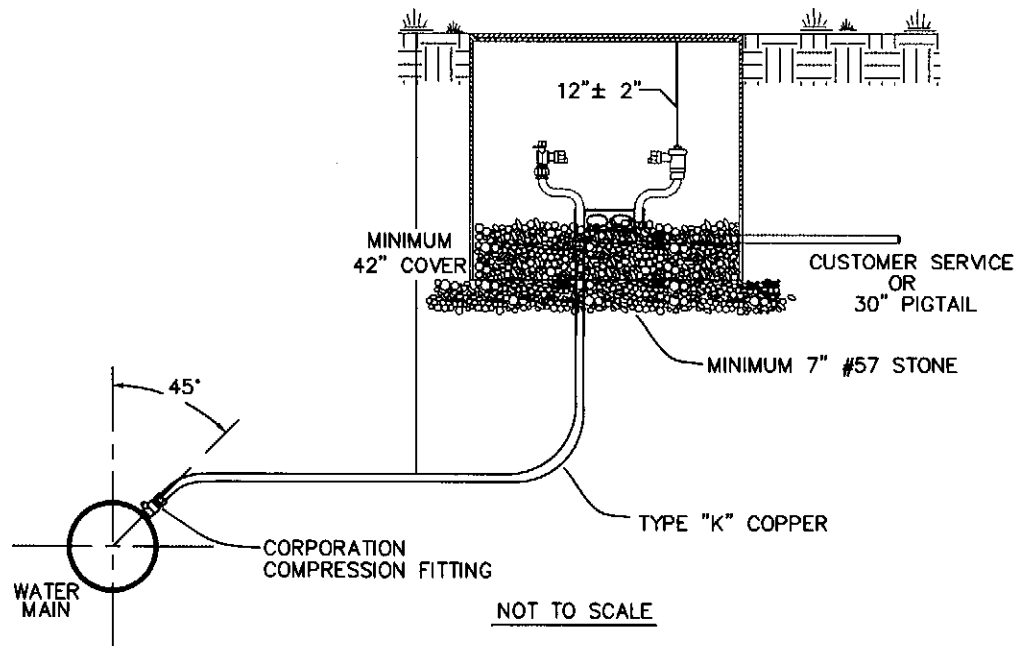
APPROVED MAY 19 2009 

REVISIONS

NO.	DESCRIPTION

STANDARD DRAWING FOR  
**TYPICAL 5/8" x 3/4" WATER METER SETTER**  
FOR 3/4" WATER SERVICE

206.00



**NOTES:**

- A. THE CITY SERVICE LATERAL SHALL EXTEND PARALLEL FROM THE WATER MAIN TO THE METER SETTER AND MAINTAIN THE SAME COVER AS REQUIRED FOR THE WATER MAIN. THE ONLY EXCEPTION IS IN A CUL-DE-SAC. IN THIS CASE, ONE HORIZONTAL BEND WILL BE ALLOWED. HOWEVER, THE BEND MUST BE FIELD LOCATED AND SHOWN ON THE AS-BUILTS.
- B. ALL WATER TAPS SHALL BE WET TAPS.


**C. APPROVED CORPORATIONS:**

- COMPRESSION
- 3/4": -MUELLER 300 BALL CORPORATION VALVE B-25008 SERIES  
-FORD FB1000-3-Q
- 1": -MUELLER 300 BALL CORPORATION VALVE B-25008 SERIES  
-FORD FB1000-4-Q

FLARED (OPTIONAL)

- 3/4": -MUELLER B-25000 SERIES WITH H-15063 EIGHTH BEND  
-FORD FB600-34 WITH LA02-33 EIGHTH BEND
- 1": -MUELLER B-25000 SERIES WITH H-15063 EIGHTH BEND  
-FORD FB600-4 WITH LA02-44 EIGHTH BEND

*Settled 1752*  
**JAMESTOWN**  
NORTH CAROLINA

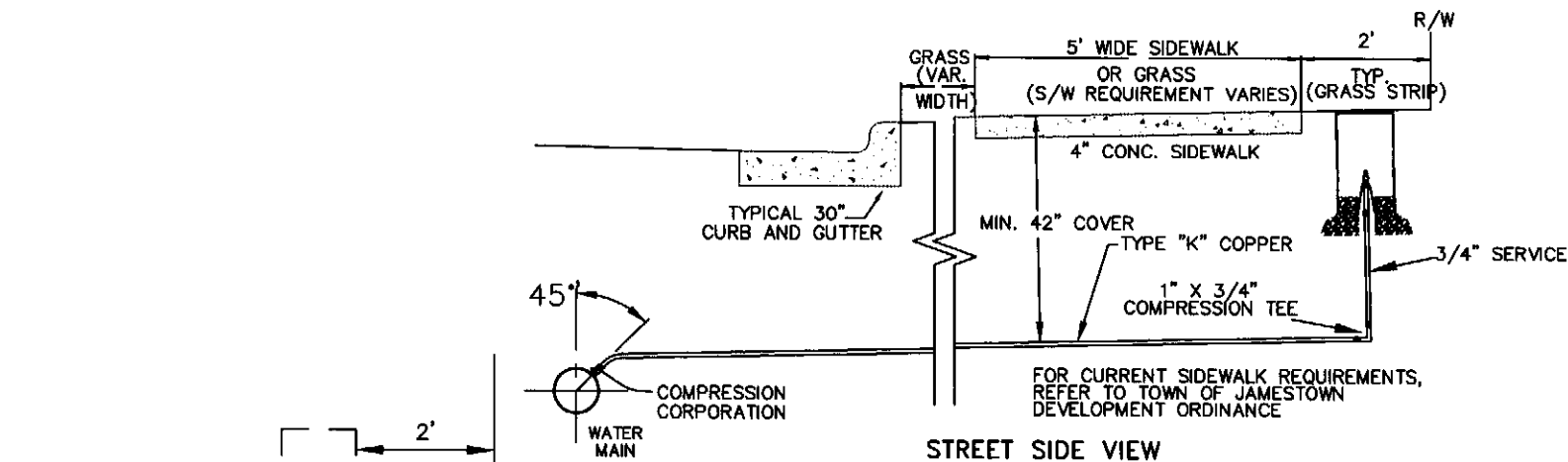
APPROVED MAY 19 2009 

REVISIONS

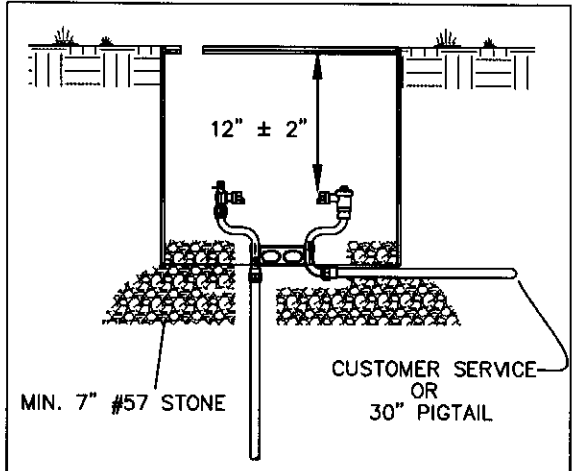
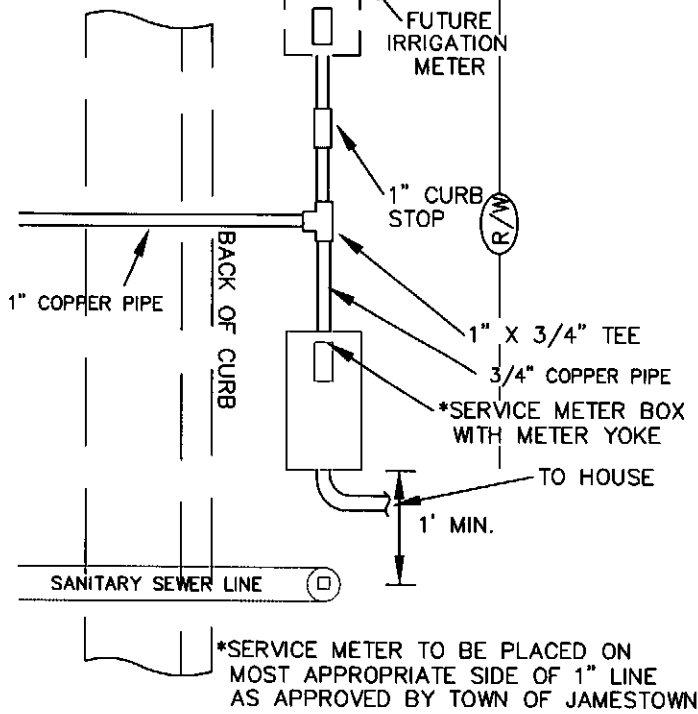
STANDARD DRAWING FOR  
**3/4" AND 1" SERVICE LINE INSTALLATION**  
FOR REHABILITATION OF 3/4" AND 1" WATER SERVICES

210.00





STREET SIDE VIEW



STREET FRONT VIEW

NOTES:

- A. THE TOWN SERVICE LATERAL SHALL EXTEND PERPENDICULAR FROM THE WATER MAIN TO THE METER SETTER AND MAINTAIN THE SAME COVER AS REQUIRED FOR THE WATER MAIN. THE ONLY EXCEPTION IS IN A CUL-DE-SAC. IN THIS CASE, ONE HORIZONTAL BEND WILL BE ALLOWED. HOWEVER, THE BEND MUST BE FIELD LOCATED AND SHOWN ON THE AS-BUILTS.
- B. ALL WATER TAPS SHALL BE WET TAPS.
- C. APPROVED CORPORATIONS:  
 COMPRESSION  
 3/4": -MUELLER 300 BALL CORPORATION VALVE B-25008 SERIES -FORD FB1000-3-Q  
 1": -MUELLER 300 BALL CORPORATION VALVE B-25008 SERIES -FORD FB1000-4-Q  
 FLARED (OPTIONAL)  
 3/4": -MUELLER B-25000 SERIES WITH H-15063 EIGHTH BEND -FORD FB600-34 WITH LA02-33 EIGHTH BEND  
 1": -MUELLER B-25000 SERIES WITH H-15063 EIGHTH BEND -FORD FB600-4 WITH LA02-44 EIGHTH BEND
- E. FOR RIBBON PAVEMENT ROADS, THE WATER METER BOX AND SETTER SHALL BE LOCATED WITHIN THE GRASS STRIP, WHICH IS LOCATED 2' INSIDE OF THE RIGHT-OF-WAY LINE.

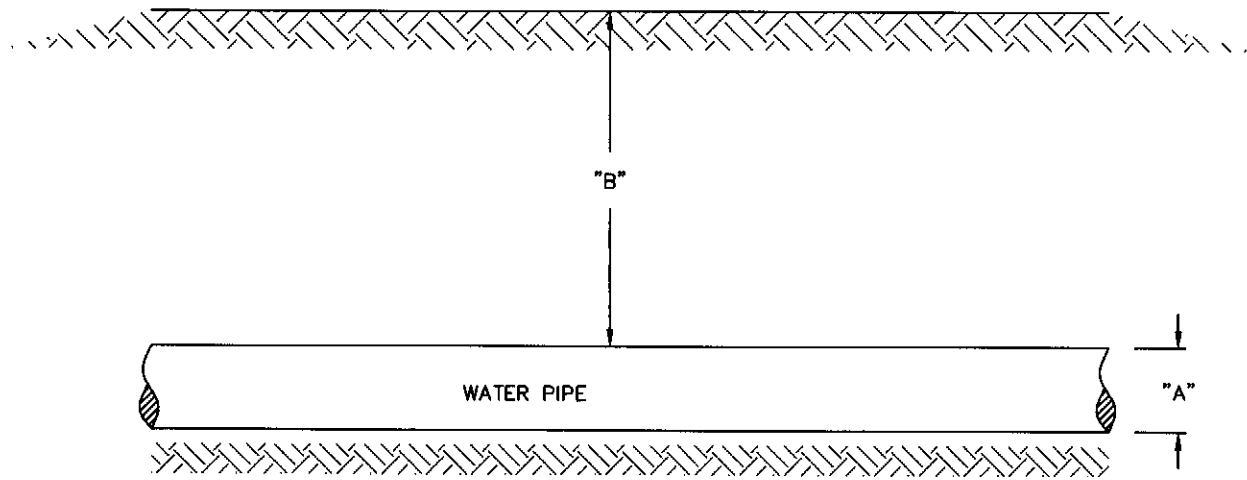
*Settled 1752*  
**JAMESTOWN**  
 NORTH CAROLINA

APPROVED: MAY 19, 2009

REVISIONS

STANDARD DRAWING FOR  
 3/4" AND 1" SERVICE LINE INSTALLATION (NEW)  
 FOR 3/4" AND 1" WATER SERVICES

212.00



"A"	"B"
6" - 10"	48" MIN. COVER
12" - 36"	54" MIN. COVER

*Settled 1752*  
**JAMESTOWN**  
 NORTH CAROLINA

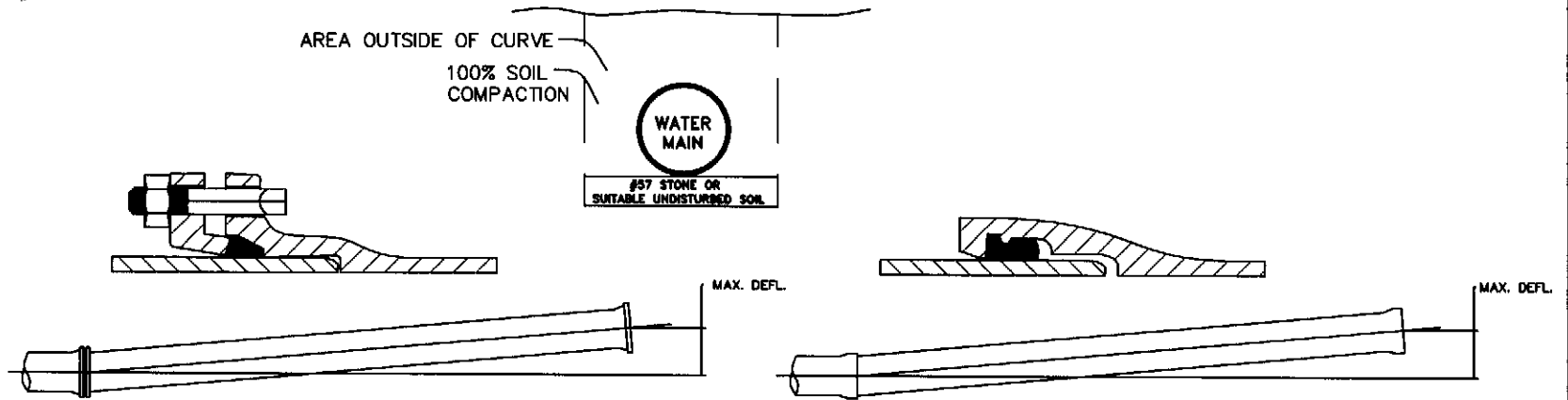
APPROVED... MAY 19 2009

REVISIONS	

STANDARD DRAWING FOR  
**WATER PIPE COVER REQUIREMENTS**  
 FOR 6" - 36" WATER PIPE

230.00

**WATER MAIN INSTALLATION TRENCH**



**MECHANICAL JOINT**

**PUSH ON JOINT**

Size	Deflection Angle	Laying Length				Laying Length				
		18 ft.		20 ft.		Deflection Angle	18 ft.		20 ft.	
		Max Defl.	Approx. Radius	Max. Defl.	Approx. Radius		Max Defl.	Approx. Radius	Max. Defl.	Approx. Radius
in.	deg.-min.	in.	ft.	in.	ft.	deg.-min.	in.	ft.	in.	ft.
3	8-18	31	125	35	140	5	19	205	21	230
4	8-18	31	125	35	140	5	19	205	21	230
6	7-07	27	145	30	160	5	19	205	21	230
8	5-21	20	195	22	220	5	19	205	21	230
10	5-21	20	195	22	220	5	19	205	21	230
12	5-21	20	195	22	220	5	19	205	21	230
14*	3-35	13.5	285	15	320	3	11	340	12	380
16*	3-35	13.5	285	15	320	3	11	340	12	380

\* FOR 14" AND LARGER PUSH ON JOINTS, MAX. DEFLECTION ANGLE MAY BE LARGER THAN SHOWN ABOVE. CONSULT THE MANUFACTURER

*Settled 1752*  
**JAMESTOWN**  
NORTH CAROLINA

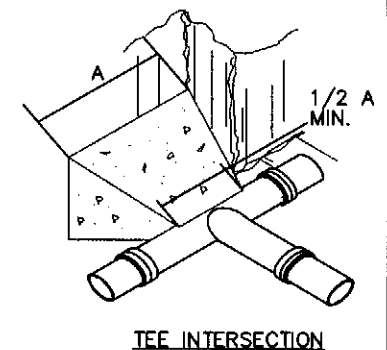
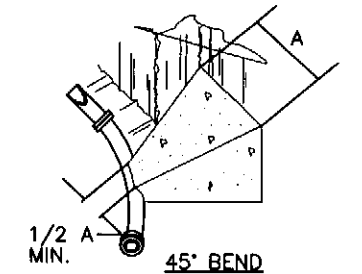
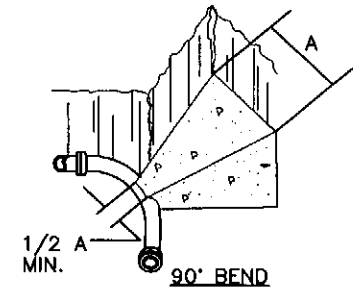
REVISIONS


STANDARD DRAWING FOR  
MAXIMUM JOINT DEFLECTION  
FOR DUCTILE IRON WATER LINE

231.00

APPROVED...MAY 19 2009 *[Signature]*

REACTION BEARING AREAS FOR HORIZONTAL WATER PIPE BENDS BASED ON TEST PRESSURE OF 200 PSI									
SIZE AND DEGREE OF BEND	STATIC THRUST IN POUNDS	FAIRLY DRY CLAY 4,000 LB/SQFT	SOFT CLAY 2,000 LB/SQFT	GRAVEL, COARSE 16,000 LB/SQFT	DRY CLAY - ALWAYS DRY 8,000 LB/SQFT	SAND - COMPACT/FIRM 8,000 LB/SQFT	SAND - CLEAN & DRY 4,000 LB/SQFT	ROCK 10,000 LB/SQFT	TIE RODS REQUIRED
<b>6"</b>									
11.25°	1108	1	1	1	1	1	1	1	
22.50°	2207	1	2	2	1	1	1	1	
45°	4328	2	3	3	1	1	2	1	
90°	7996	2	4	5	1	1	2	1	
PLUG	5665	2	3	4	1	1	2	1	2- 1/2" DIA.
<b>8"</b>									
11.25°	1970	1	1	2	1	1	2	1	
22.50°	3922	1	2	3	1	1	3	1	
45°	7694	2	4	5	1	1	5	1	
90°	14215	4	8	9	2	2	8	2	
PLUG	10053	3	5	6	2	2	6	1	2- 5/8" DIA.
<b>12"</b>									
11.25°	4433	2	3	3	1	1	2	1	
22.50°	8826	3	5	6	2	2	3	1	
45°	17312	5	9	11	3	3	5	2	
90°	31983	8	16	19	4	4	8	4	
PLUG	22619	6	12	14	3	3	6	3	4- 3/4" DIA.




REACTION BEARING AREAS ARE IN SQUARE FEET MEASURED IN A VERTICAL PLANE IN THE TRENCH SIDE AT AN ANGLE OF 90° TO THE THRUST VECTOR

**NOTES:**

1. CONCRETE SHALL BE 3000 PSI.
2. CONCRETE SHALL NOT CONTACT BOLTS OR ENDS OF MECHANICAL JOINT FITTINGS.
3. ALL BENDS AND INTERSECTIONS SHALL HAVE CONCRETE THRUST BLOCKING.
4. USE 6" 90° BEND VALUE FOR HYDRANTS FOR ADDITIONAL SAFETY FACTORS.

Settled 1752  
**JAMESTOWN**  
NORTH CAROLINA

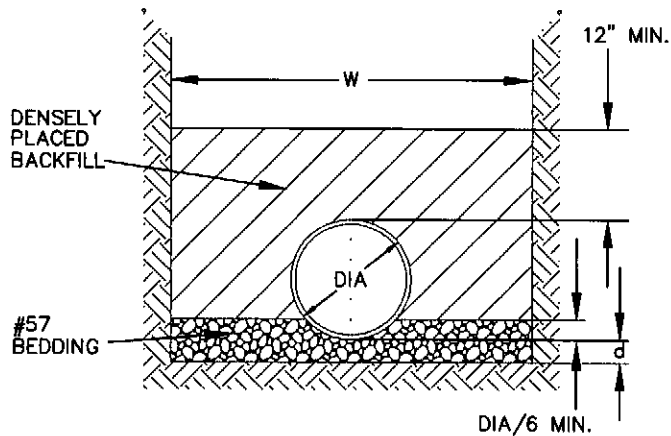
APPROVED MAY 19 2009 

REVISIONS

NO.	DESCRIPTION

STANDARD DRAWING FOR  
THRUST BLOCKING  
FOR 6" - 12" WATER LINE

232.00



**GRANULAR FOUNDATION  
BEDDING CLASS C**

**DEPTH OF BEDDING  
MATERIAL BELOW PIPE**

D	d (MIN.)
27" & SMALLER	3"
30" TO 60"	4"

TRENCH WIDTH:  
 MIN W = DIA + 16"  
 MAX W = THE LESSER OF  
           DIA + 40" OR  
           3\*DIA

IF CONTRACTOR CHOOSES TO  
 EXCAVATE PAST THE MAX W, THE  
 CONTRACTOR WILL BE  
 RESPONSIBLE FOR ALL COSTS IN  
 THE EXCAVATION BEYOND THE  
 MAX W LIMITS.

BACKFILLING NOTES ACCORDING TO CURRENT  
 EDITION OF NCDOT STANDARD SPECIFICATIONS  
 FOR ROADS AND STRUCTURES:

- A. EXCAVATION, TRENCHING, AND BACKFILLING SHALL BE DONE ACCORDING TO SECTION 1505.
- B. BACKFILLING SHALL ALSO BE IN ACCORDANCE WITH ARTICLE 300-7 AND COMPACTED TO 95% OF THE AASHTO T99 NCDOT MODIFIED PROCTOR.
- C. THE LAST 8" OF BACKFILL BELOW THE FINISHED SURFACE OF THE SUBGRADE SHALL BE COMPACTED TO 100% OF THE AASHTO T99 NCDOT MODIFIED PROCTOR.

BEDDING  
 A. SUBGRADES SHOULD BE EXCAVATED OR OVER EXCAVATED, IF NECESSARY, SO A UNIFORM FOUNDATION FREE OF PROTRUDING ROCKS MAY BE PROVIDED.

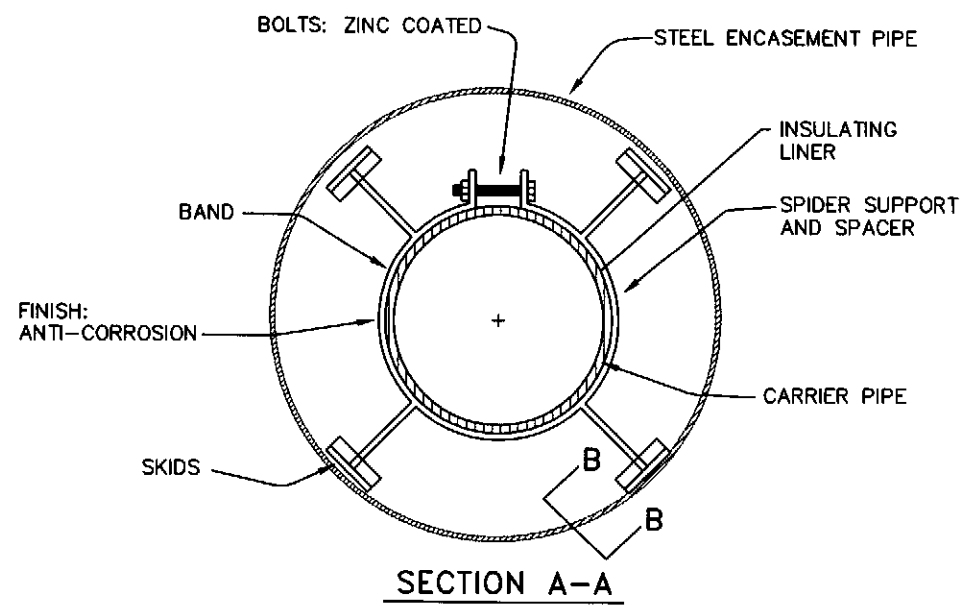
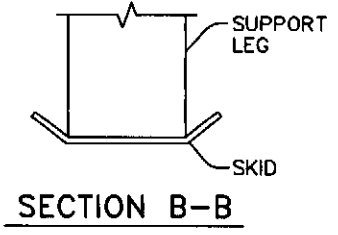
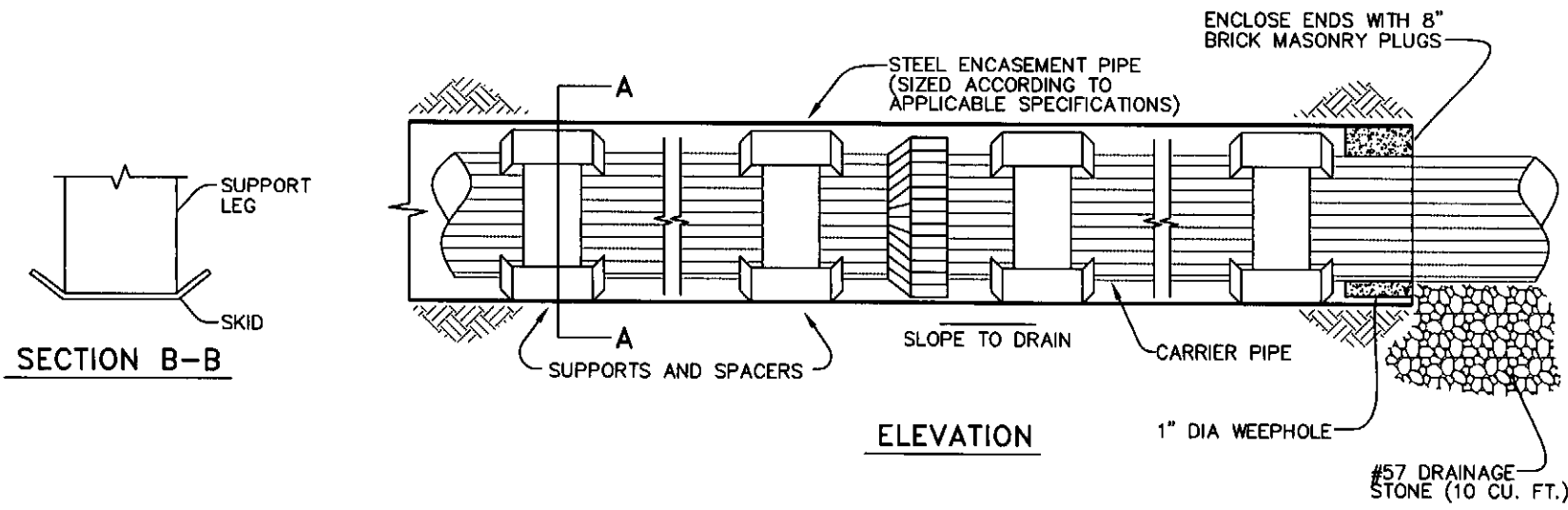
*Settled 1752*  
**JAMESTOWN**  
 NORTH CAROLINA

APPROVED: MAY 19 2009 

REVISIONS

STANDARD DRAWING FOR  
 D.I. PIPE BEDDING & MAXIMUM  
 DEPTH OF COVER

233.00



**NOTES:**

- A. THE CARRIER PIPE SUPPORTS SHALL BE MADE OF STRUCTURAL STEEL LOW CARBON HOT ROLLED FLAT PLATE ACCORDING TO ASTM A 36/A.
- B. THE CARRIER PIPE SUPPORTS SHALL BE MANUFACTURED BY SPIDER MANUFACTURING, INC. OR AN APPROVED EQUAL.
- C. 4" - 16" CARRIER PIPE REQUIRES TWO "SPIDER" SUPPORTS PER SECTION OF PIPE.
- D. 18" - 36" CARRIER PIPE REQUIRES THREE "SPIDER" SUPPORTS PER SECTION OF PIPE.
- E. 18" AND LARGER CARRIER PIPE SUPPORTS ARE MANUFACTURED AS TWO-PIECE COMPONENTS.
- F. INSULATING LINER SHALL BE EPDM NON-CONDUCTIVE RUBBER 3/16" ± 1/16" THICKNESS (ASTM D-2000 75E).

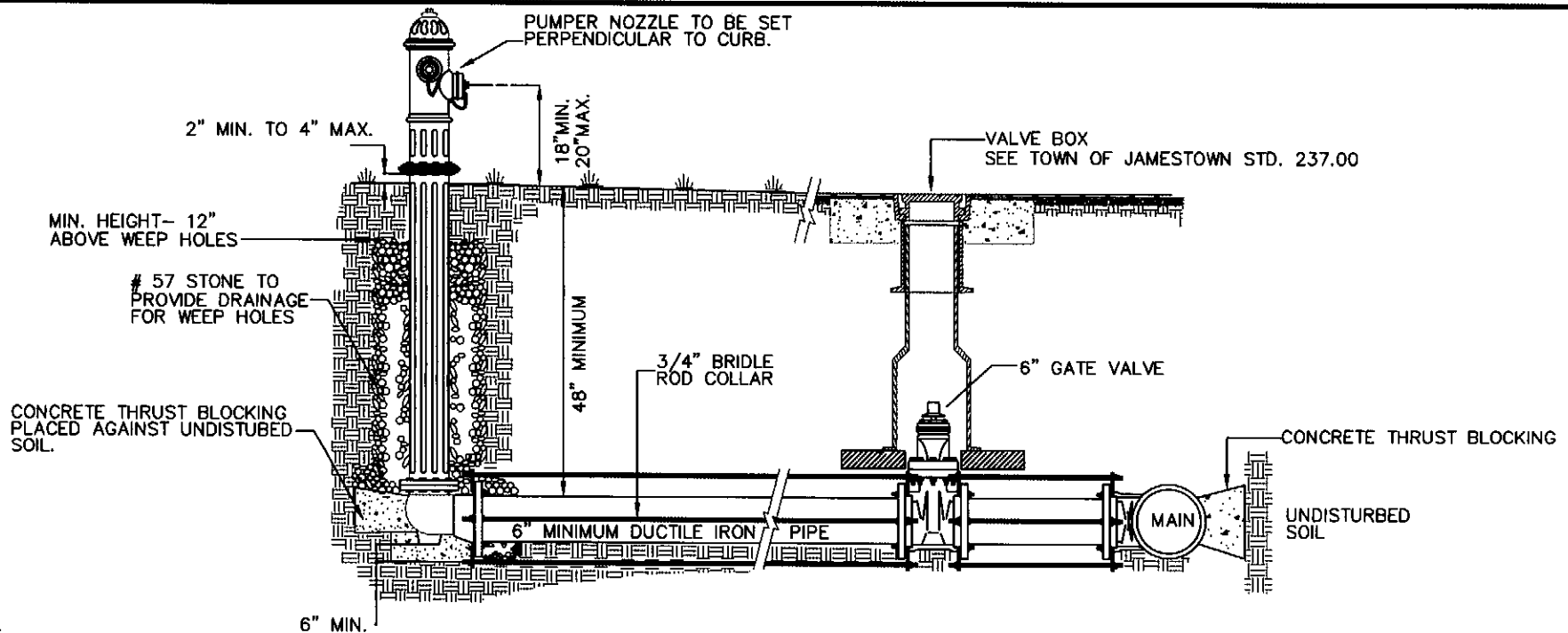
*Settled 1759*  
**JAMESTOWN**  
 NORTH CAROLINA

APPROVED *MAY 19 2009*

REVISIONS

STANDARD DRAWING FOR  
**SPIDER SUPPORT**  
 FOR DUCTILE IRON PIPE INSTALLED IN STEEL ENCASEMENT PIPE

234.00



**NOTES:**

**A. RESTRAINT SYSTEM**

- OPTION 1— HYDRANT LEAD PIPE SHALL BE SECURED BY (FOUR) 3/4" RODS. (SEE SHEET 1 OF 2)
- OPTION 2— HYDRANT LEAD PIPE JOINTS SHALL BE RESTRAINED BY USING A RESTRAINED HYDRANT TEE AND USING RESTRAINED JOINT RETAINER GLANDS. (SEE SHEET 2 OF 2)
- ALL OPTIONS— CONCRETE THRUST BLOCKING REQUIRED BEHIND THE HYDRANT AND BEHIND THE TEE. BOLTS, NUTS, AND WEEP HOLES TO BE FREE OF CONCRETE.

**B. HYDRANT PLACEMENT**

- 1) C&G ROAD— FACE OF HYDRANT SET 12" TO 30" FROM BACK OF CURB.
- 2) RIBBON PAVEMENT ROAD— CENTER OF HYDRANT PLACED 1' INSIDE RIGHT OF WAY LINE.
- 3) VARIABLES— HYDRANT SHALL NOT FALL IN THE FLOW-LINE OF THE DITCH.  
HYDRANT SHALL BE SET BEYOND THE HINGE POINT OF THE CUT OR FILL LINE OR AS DIRECTED BY THE ENGINEER.

**C. THE HYDRANT SHALL BE GIVEN 2 COATS OF PAINT AS FOLLOWS:**

	FIRST COAT	FINAL FIELD COAT
BARREL ABOVE GROUND	SAFETY YELLOW DEVON PAINT #4308-9400	SAFETY YELLOW DEVON PAINT #4308-9400
BONNET AND CAPS	WHITE DEVON PAINT #4308-0100	WHITE DEVON PAINT #4308-0100
BARREL BELOW GROUND	TWO COATS OF PITCH TAR VARNISH OR BLACK ASPHALTUM PAINT	

*Settled 1759*  
**JAMESTOWN**  
NORTH CAROLINA

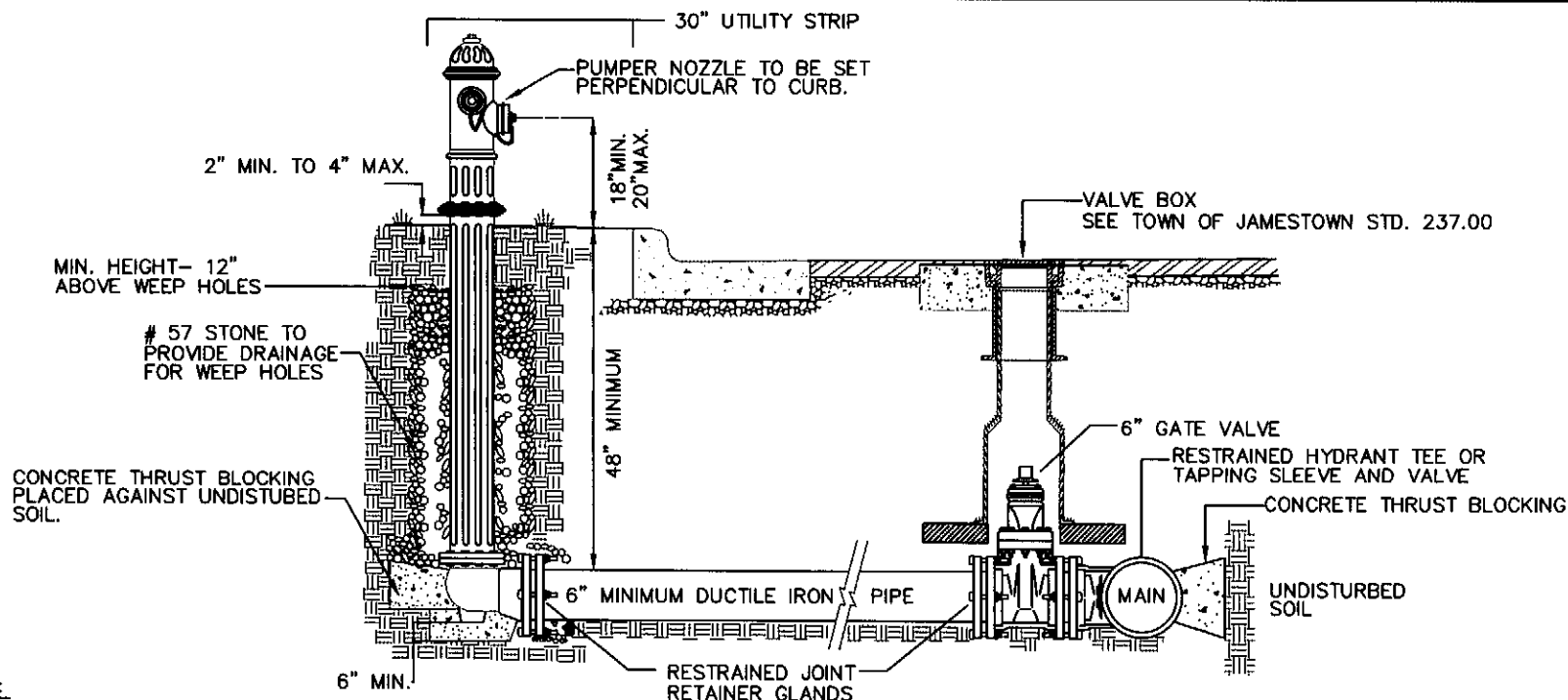
APPROVED MAY 19 2009

REVISIONS

STANDARD DRAWING FOR  
FIRE HYDRANT INSTALLATION  
FOR 6" 3-WAY FIRE HYDRANTS

235.00

SHEET 1 OF 2



**NOTES:**

**A. RESTRAINT SYSTEM**

- OPTION 1— HYDRANT LEAD PIPE SHALL BE SECURED BY (FOUR) 3/4" RODS. (SEE SHEET 1 OF 2)
- OPTION 2— HYDRANT LEAD PIPE JOINTS SHALL BE RESTRAINED BY USING A RESTRAINED HYDRANT TEE AND USING RESTRAINED JOINT RETAINER GLANDS. (SEE SHEET 2 OF 2)
- ALL OPTIONS— CONCRETE THRUST BLOCKING REQUIRED BEHIND THE HYDRANT AND BEHIND THE TEE. BOLTS, NUTS, AND WEEP HOLES TO BE FREE OF CONCRETE.

**B. HYDRANT PLACEMENT**

- 1) C&G ROAD— FACE OF HYDRANT SET 12" TO 30" FROM BACK OF CURB.
- 2) RIBBON PAVEMENT ROAD— CENTER OF HYDRANT PLACED 1' INSIDE RIGHT OF WAY LINE.
- 3) VARIABLES— HYDRANT SHALL NOT FALL IN THE FLOW-LINE OF THE DITCH.  
HYDRANT SHALL BE SET BEYOND THE HINGE POINT OF THE CUT OR FILL LINE OR AS DIRECTED BY THE ENGINEER.

**C. THE HYDRANT SHALL BE GIVEN 2 COATS OF PAINT AS FOLLOWS:**

	FIRST COAT	FINAL FIELD COAT
BARREL ABOVE GROUND	SAFETY YELLOW DEVON PAINT #4308-9400	SAFETY YELLOW DEVON PAINT #4308-9400
BONNET AND CAPS	WHITE DEVON PAINT #4308-0100	WHITE DEVON PAINT #4308-0100
BARREL BELOW GROUND	TWO COATS OF PITCH TAR VARNISH OR BLACK ASPHALTUM PAINT	_____

*Settled 1752*  
**JAMESTOWN**  
NORTH CAROLINA

REVISIONS

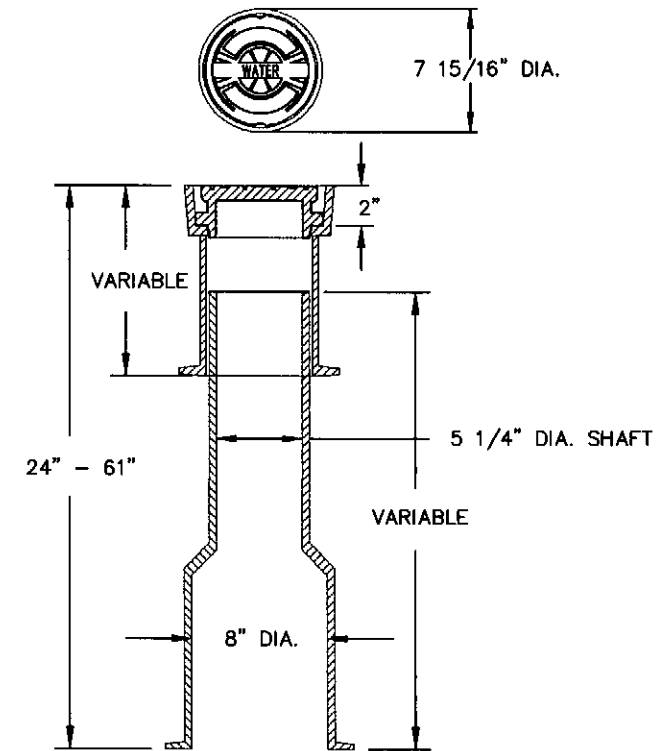
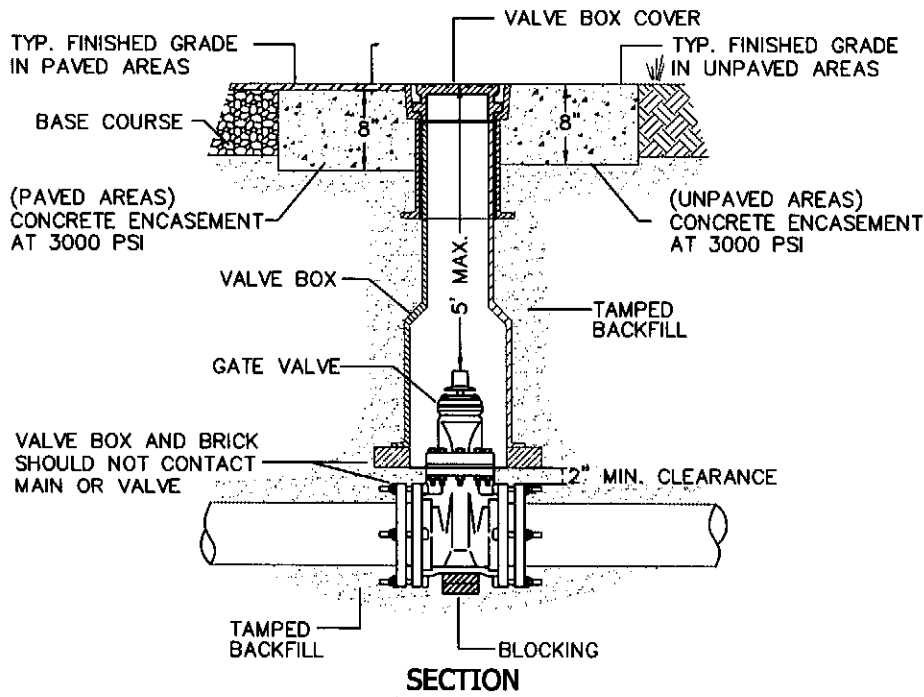
STANDARD DRAWING FOR  
FIRE HYDRANT INSTALLATION  
FOR 6" 3-WAY FIRE HYDRANTS

235.00

SHEET 2 OF 2

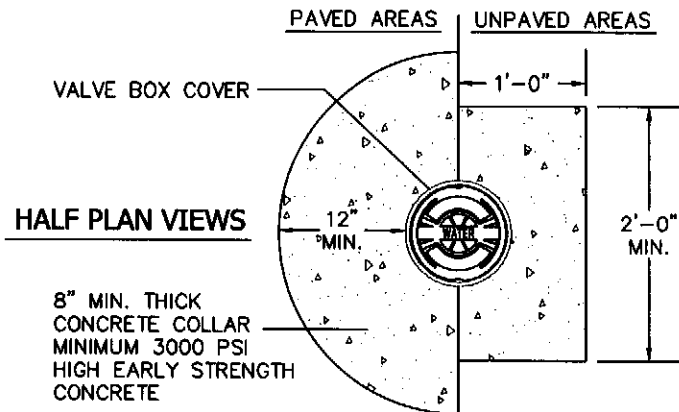
APPROVED: MAY 19, 2009





**NOTES:**

- A. THE BASE SHALL BE CENTERED OVER THE VALVE. TWO (2) BRICKS ARE TO BE PLACED AS SHOWN UNDER THE BASE AT 180°.
- B. VALVE BOX SHALL CONFORM TO ASTM A48, CLASS 30B.
- C. EXTENSIONS:
  - 1. VALVE BOX EXTENSIONS SHALL BE 5" DIAMETER SOIL PIPE.
  - 2. WHEN OPERATING NUT DEPTH EXCEEDS 5'-0" BELOW FINISHED GRADE, PROVIDE EXTENSION STEM WITH 2" SQUARE OPERATING NUT. THE EXTENSION STEM SHALL BE PART OF A MANUFACTURER APPROVED EXTENSION KIT.
- D. APPROVED MANUFACTURERS/MODELS INCLUDE:
  - 1. CHARLOTTE- MODEL # 562-A.
  - 2. TYLER- SERIES 6855, MODEL # 562-A, 564-A, AND 664-A.
  - 3. EUJW- 8555 SERIES, MODEL # 562-A, 564-A, AND 664-A.



Settled 1752  
**JAMESTOWN**  
 NORTH CAROLINA

APPROVED MAY 19 2009

REVISIONS

STANDARD DRAWING FOR  
**WATER VALVE BOX**  
 FOR ROADWAY AND UNPAVED AREAS

237.00